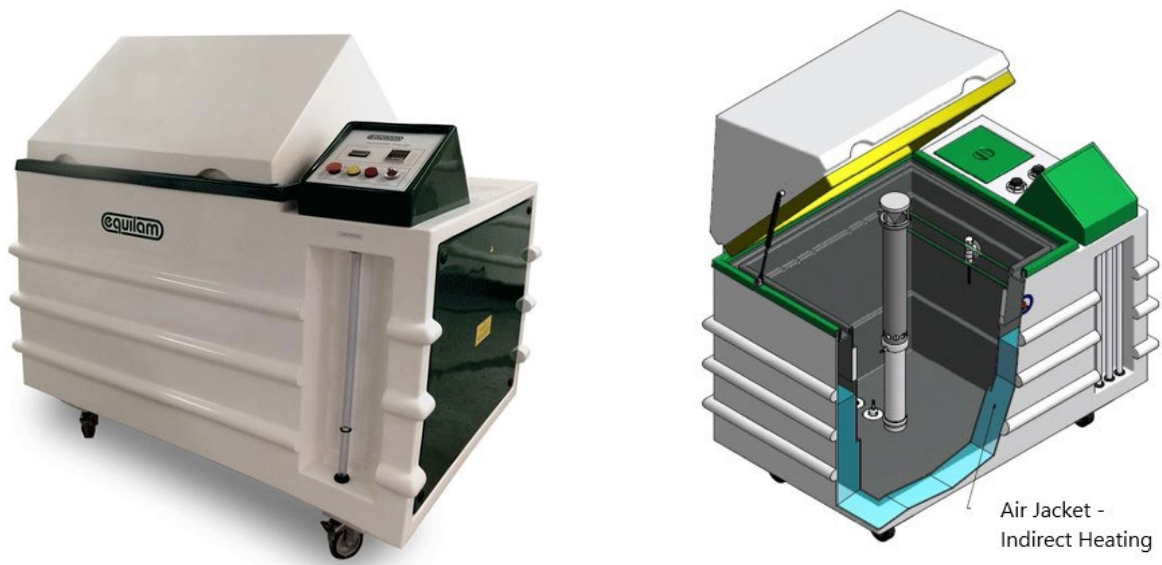


Humidity Test Chamber - SSUMe

- Built in fiberglass with special resin of high chemical and temperature resistance (inert material), externally and internally.
- The SSUMe Series was designed with an air jacket and thermal insulation, ensuring great temperature homogeneity in the internal test chamber providing a final realist result.
- The equipment guarantees great electrical energy savings as part of ecologically correct equipment line.(GREEN).

US PATENT # 10371623



The SSUMe Series was developed to test metallic or non-metallic samples, in a humid atmosphere of constant water condensation or in alternating atmospheres to identify the appearance of corrosion, blisters, loss of color and brightness on coatings and defects in whole products or in parts

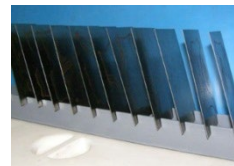
Technical Specifications

Models	SS 600UMe	SS 1000UMe	SS 1300UMe	SS 3000UMe
Chamber Temperature	Amb. Temp. +7.4°F(+4°C) - +140°F (+60°C) – others consult us			
Chamber Homogeneity	+/- 0,5°C			
Chamber R.H.	97%, +/- 3%			
Work environment conditions (labs)	17°C to 27°C			
Standards	ASTM D2247 – ISO 6270-2 CH – DIN 50017 KK			
Operating Voltage	208 ~ 220 V, 60Hz, 1 Ø (other consult us)			
	16 A	16 A	32 A	45 A
Internal Volume (Liters)	159 gal (600 L)	264 gal (1,000 L)	343 gal (1,300 L)	792 gal (3,000 L)
Approximate net weight (Kg)	408 lbs. (185 kg)	463 lbs. (210kg)	639 lbs. (290 kg)	771 lbs. (350 kg)
Approximate Shipping Weight (kg)	525 lbs (238 kg)	617 lbs. (280kg)	772 lbs. (350kg)	1,433 lbs. (650kg)
Internal Dimensions W x D x H (mm)	32.3" x 25.6" x 30.7" (820 x 650x 780)	47.2" x 31.9" x 33.5" (1,200x 810 x 850)	51.2"x 30.7"x 35.4" (1,300 x 780 x 900)	81.8"x 42.5"x 39.3" (2,080 x 1,080 x 1,000)
External Dimensions W x D x H (mm)	74.4" x 45.3" x 57.5" (1,890 x 1,150 x 1,460)	76.4" x 44.1" x 63" (1,940 x 1,120 x 1,600)	97.6"x 49.2"x 64.8" (2,480 x 1,250 x 1,645)	133.8"x 62.9"x 70.8" (3,400 x 1,600 x 1,800)
Approximate Crate Dimensions W x D X H (mm)	78.7" x 47.2" x 61" (2,000 x 1,200 x 1,550)	80.7" x 51.2" x 68.9" (2,050 x 1,300 x 1,750)	102.4"x 51.2"72.8" (2,600 x 1,300 x 1,850)	139.7"x 66.9" x 82.6" (3,550 x 1,700 x 2,100)

OPTIONALS ACCESSORIES

CODE: EQOP.0003

- (1) rack - 15° or 20° inclination in accordance with ASTM B117 and ISO 9227.



CODE: EQOP.0005

- Special rack for customer supplied test sample.

CODE: EQOP.0008

- (2) Fog collectors.



CODE: EQOP.0009

- Pressure regulator with water, oil filter and pressure gauge.



CODE: EQOP.0011

- Fiberglass Fume Hood (hood only).



CODE: EQOP.0012

- Fiberglass axial fan assembly capacity: 1,940 cfm. 220 ~ 208 V.

Net weight: 88 lbs. (40 kg).



CODE: EQOP.0013

- DI Water assembly includes: activated carbon water filter, DI column, LED water quality indicator.



CODE: EQOP.0014

- Spare DI water column.



CODE: EQOP.0015

- Spare activated carbon water filter.



CODE: EQOP.0016

- pH meter – Digital with standard solution.



CODE: EQOP.0017

- Conductivity meter – Digital with standard solution.



CODE: EQOP.0018

- Density-meter to measure concentration of saline solution.



CODE: EQOP.0019

- Plastic bucket with 50lb Salt EQCORR with chemical analysis

Certificate in accordance with

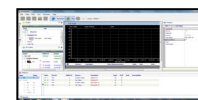
ASTM B117, ISO 9227, JIS Z 2371, MILS STD 810G.



CODE: EQOP.0044

- Supervisory Software:
Data Acquisition:

By PC (RS 232/ 485 - USB)



CODE: EQOP.0047

- Digital relative humidity (RH%) indication on the control panel.



CODE: EQOP.0118

- Grid type test brackets supports 265 lbs (120 kg) with distributed load.



CODE: EQOP.0035

- Cable port $\varnothing = 2''$
(AOther diameter, consult us)



CODE: EQOP.0169

- Inclined specimen holder for 36 screws with Nylon threaded bushings to be defined by the customer (maximum Ø22mm)



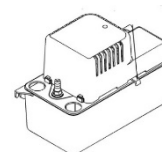
CODE: EQOP.0111

- Gas Scrubber – Exhaust system.



CODE: EQOP.0068

- Pump to drain precipitated solution - Salt Spray Chamber



CODE: EQOP.0034

- Solution tank for long term testing capacity 71.3 gal (270 Liters), with automatic solution mix and feed.



CODE: EQOP.0161

- Manual mix solution or water

Consult us

CODE: EQOP.0162

- D.I water or solution entrance to solution tank

Consult us

CODE: EQOP.0056

- CSA Certificate (Canada)

Consult us

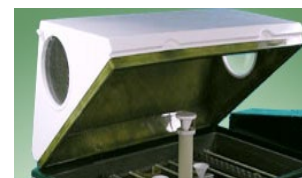
CODE: EQOP.0035

- Ø=2" cable port access



CODE: EQOP.0007

- Side window in lid to prevent dripping on samples.



CODE: EQOP.0007

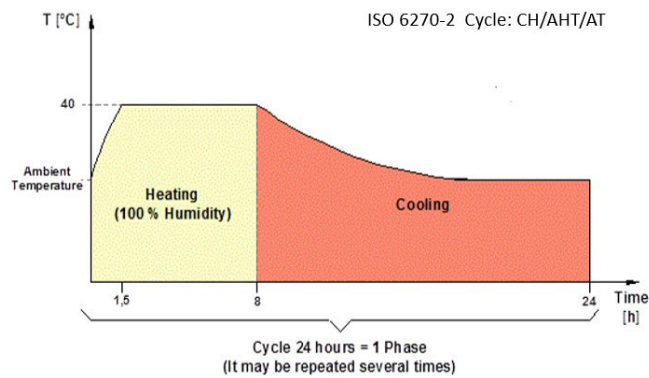
- Water Fog
ASTM D1735

Consult us

CODE: EQOP. 2000

- ISO 6270-2 code AHT and AT
- Cooling system in accordance ISO 6270-2 CHT and AT
+ software program PLC.

Consult us.



If you are interested in other special items, please contact us for further information.

Note: Equipment appearance and specifications are subject to change without notice